



Agribusiness Development Corporation

Ag Notes

JANUARY 2021 NEWSLETTER

Progress Made at ADC's Wahiawa Properties



(Above) Currently 80 percent of ADC's Galbraith Estate land outside Wahiawa is in use by farmers, with the remaining acreage to be occupied shortly pending state approval.

In the past year, Agribusiness Development Corporation (ADC) has made considerable progress in making our properties in Wahiawa and on Kauai more suitable for farming.

One example of this is our 1,200-acre Galbraith Estate land north of Wahiawa, which the state purchased in 2012 for agricultural use.

Currently, 80 percent of the Galbraith Estate land is being cultivated by

farmers growing food crops. The remaining 20 percent (240 acres) is undergoing preparations and should be utilized by the end of the year once the selected tenants receive approval by the Soil Conservation District on their respective soil conservation plan.

Some of the crops currently grown at the Galbraith site for the consumer market include bell peppers, tomatoes, cucumber, taro, eggplant, okra, papaya, citrus, avocado, banana,

dragon fruit, watermelon, green onion, and ti leaves.

Water for irrigation was previously an issue, but has since been rectified. Repairs were made to the former Del Monte well (Bott Well) that provides much-needed water to the ADC property and tenants.

Two new reservoirs recently completed—10 million and 3 million gallons in size—are currently being filled with water to assist with farmers' irrigational needs.

"We acknowledge there were challenges, including clearing and tilling the land and providing the necessary irrigational improvements," said ADC executive director James Nakatani. "Now that we've taken those major steps this past year, we can move forward with our goal of 100 percent occupancy of the land."

Nakatani noted other improvements made in recent years at the Galbraith property:



ADC recently completed two on-site reservoirs to hold 13 million gallons of water for irrigation.

- The removal of over 150 abandoned vehicles since last summer by a private towing company to eventually clear the area for agricultural use.
- Hiring of a new security firm, with increased patrols of our properties, particularly at night, to discourage illegal activity and theft/vandalism of our water infrastructure.

ADC wants to thank the community for their patience during our efforts to rehabilitate the land for cultivation.

NEXT STEPS FOR ADC

With the recent progress made at our Wahiawa properties, ADC is set to



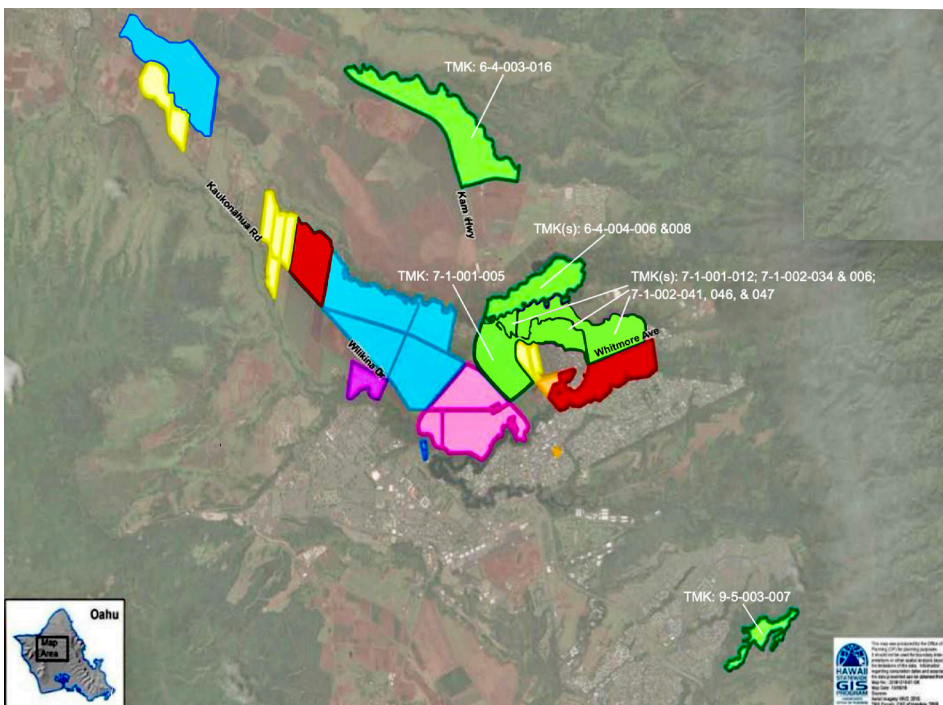
begin soliciting applications in Spring 2021 for its remaining 1,200 acres in the Central Oahu area (see areas shaded in green on map). An official announcement will be made in Spring 2021 to interested farmers and the

general public.

Once applications are submitted, our ADC Board of Directors will then determine which applicants qualify as part of the selection process. Once the finalists are selected, we will begin negotiating terms of leases with the prospective tenants and announce new signees later this year.

Local farmers statewide have faced huge logistical and financial challenges from the recent pandemic, even greatly impacting tenants at our ADC properties on Oahu and Kauai. Regardless, our tenants have made major adjustments to their operations to continue providing much needed food supplies to our supermarkets, farmers' markets and other retail outlets.

We plan to build upon the state's goal of food sustainability by signing new tenants to our ADC lands and in continuing our partnerships with other key players in the agriculture community.



Christmas tree sales brisk at Helemano Farms



Aaron O'Brien inspects Christmas trees grown on his Wahiawa tree farm this past holiday season.



During this past holiday season, you may have seen the recent media coverage about our Christmas tree farm tenant, Helemano Farms.

Because of the high public demand for Christmas trees during this COVID-19 pandemic, Helemano Farms' entire seasonal inventory of 5,000 locally-raised Christmas trees was sold out by the first week of December!

Mahalo to the local community for their continual financial and moral support of our local farmers during these challenging times!