



Agribusiness Development Corporation

# Ag Notes

MARCH 2021 NEWSLETTER

## ADC Seeking Farming Tenants For Central Oahu Properties



**ADC is accepting applications for agricultural use of its remaining parcels in Central Oahu.**

The State Agribusiness Development Corporation (ADC) is currently accepting applications from interested farmers and cattle ranchers for its remaining vacant parcels in Central Oahu for potential agricultural production and pastoral use.

"After spending much of last year clearing the area, tilling the land and providing the necessary irrigational improvements, we can now move forward with our goal of full occupancy of our lands in Central Oahu," said ADC executive director James Nakatani.



The ADC has available vacant lands for agricultural production in four areas in Central Oahu – see link to general location map here: <https://hdoa.hawaii.gov/adc/files/2021/03/GENERAL-MAP.pdf>.



- **Paalaa Uka, Kamehameha Hwy./Paalaa Uka Pupukea Rd., TMK: 6-4-003-016.** Size: 511 Gross Acres, approximately 385 is usable for diversified farming. Minimum size lot for diversified agriculture operation is 100 acres.
- **Whitmore Lands (North), Kamehameha Hwy., TMK(s) 6-4-004-006 & 008.** Size: 234 Gross Acres, approximately 162 acres is usable for diversified farming

- **Whitmore Agricultural Lands, Whitmore Ave./Saipan Rd., TMK(s): 7-1-001-012, 7-1-002-041, 046, & 047, and 7-1-002-034 & 006.** (These lands have been designated for green houses and orchards)  
Size: TMK: 7-1-001-012 (32 gross acres); TMK: 7-1-002-041, 046 and 047 (205 gross acres); and TMK: 7-1-002-034, and 006 (179 gross acres) 416 Gross Acres, 280 Acres
- **Mililani Mauka, Keni St., TMK: 9-5-003-007.** Size: 91 Gross Acres, farmable acres TBD.



Multi-year licenses will be issued to farm designated lands, or occupy for pastoral use based on merit. All applications will be rated and only the highest rated applicants will be selected.

Cattle ranchers may apply for the available parcels, however, preference will be given to crop farmers. Accordingly, we are seeking farmers and ranchers with the following requirements of a minimum five (5) years farming experience; or Owner-operator of an established farm conducting a substantial farming or cattle ranching operation.



While not required, it is highly preferred that applicants be trained and certified in food safety and good agricultural practices.

All applications will be rated on a scoring system based on the following:

- Years of farming experience
- Whether the proposed harvested crops appeal to consumers and will generate a profit.
- The applicant demonstrating adequate financial ability.
- The applicant demonstrating adequate goals and strategies in their business plan to achieve them.
- The applicant's proposed operation meeting basic regulatory requirements and industry standards regarding safety and sanitation.

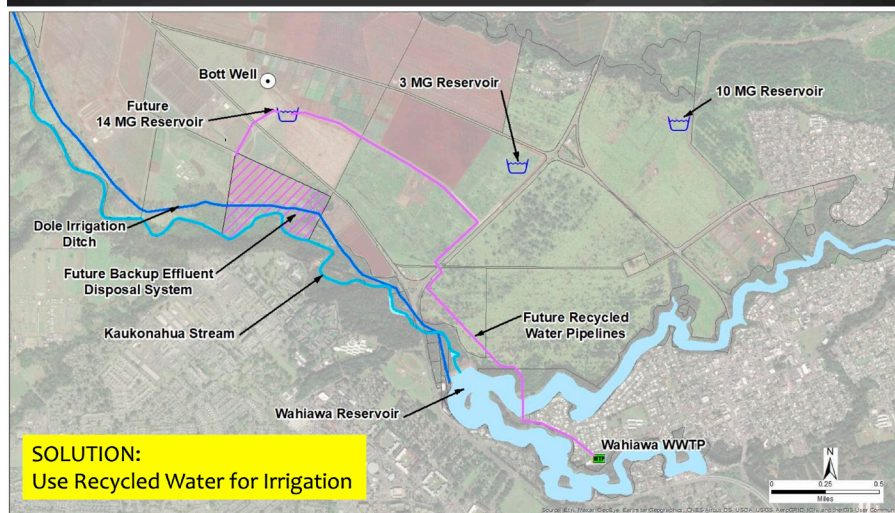
All interested applicants can go the ADC website at <http://hdoa.hawaii.gov/adc/land-application/> to obtain an application form, or they can contact the ADC office at (808) 586-0186.

Office hours are 8 a.m. to 5 p.m. Monday through Friday, except holidays. Applications must be received by the ADC Office by 2 p.m. Friday, April 9, 2021.



## Government Agencies Look At Wahiawa Recycled Water For Irrigation

### ADC Recycled Water System



The State Department of Health, City & County of Honolulu, and State Agribusiness Development Corporation are studying a long-term proposal that would use treated wastewater from Lake Wilson for irrigational use at ADC's nearby properties.

The City's Wahiawa Wastewater Treatment Plant currently discharges about 1.6 million gallons of quality treated effluent (R-1 level) each day into Lake Wilson in Wahiawa. While still in the conceptual stages and yet to undergo an environmental review process, the proposal would transfer some of that water via the Dole Irrigation Ditch to private lands and some ADC lands in the Wahiawa and Waialua areas.

ADC's diversified agriculture plan for the region will require about 5 million gallons of irrigation water per day. Using treated effluent for irrigational use will reduce dependence on our precious groundwater supply, particularly during drought conditions.

Some of the potential uses for the R-1 water, could include:

- Landscape, orchard, and food crop irrigation via spray and drip irrigation.
- Storage in irrigation reservoirs and ponds
- Home irrigational use per guidelines
- Emergency use for fire fighting

The proposal has been recently presented before the Wahiawa Neighborhood Board and the public will be updated by government officials and allowed to provide input if the plan moves forward.