



Marques' soft scale (MSS)

Alecanochiton marquesi Hempel, 1921

SCIENTIFIC NAME:	<i>Alecanochiton marquesi</i> Hempel, 1921 (Hemiptera: Coccidae)
FIRST DETECTED:	O'ahu, Southern Ko'olau Mountains, near Hawai'i Loa Ridge Trail
LOCATION:	Only one reported location (O'ahu) as of April 2026
DESCRIPTION:	Oval and convex (adult females ~2 mm long, 1.5 mm wide, and 1.25 mm high), and range in coloration from whitish gray, yellow, pinkish, to brown or dark gray. A glassy, waxy, brittle material covers their surface and also forms a fringe around their body.
QUARANTINE:	This report represents a NEW U.S. AND HAWAII STATE RECORD . <i>Alecanochiton marquesi</i> is a U.S. Regulated Plant Pest.

MSS ON COFFEE



Photo: Takumasa Kondo*

TOP VIEW OF ADULT FEMALE



Photo: Takumasa Kondo*

MSS TENDED BY ANTS



Photo: Takumasa Kondo*

*Takumasa Kondo (Corporación Colombiana de Investigación Agropecuaria-AGROSAVIA)

Marques' soft scale (MSS)

Alecnochiton marquesi Hempel, 1921

Infests plants in several families, including agricultural, ornamental, and native species. It is unknown where the first establishments in Hawai'i occurred, but MSS was first detected on O'ahu infesting *Polyscias lydgatei*, an endemic species in danger of extinction. In Brazil and Colombia, MSS is a pest of coffee and sapodilla. *Alecnochiton marquesi* feeds on phloem sap, and is associated with sooty mold, which weakens plants. In Brazil and Colombia, MSS is often tended to by ants, including *Wasmannia auropunctata*, the little fire ant (LFA).

CONCERN:



MSS ON *POLYSCIAS*

Photo: DLNR-DOFAW



MSS ON *POLYSCIAS*

Photo: DLNR-DOFAW

This pest has been recorded on several hosts (not necessarily in Hawai'i), including:

Araliaceae**	Rubiaceae
<i>Polyscias lydgatei</i> **	<i>Coffea</i>
Ebenaceae	Coffee (<i>Coffea arabica</i>)
Japanese persimmon (<i>Diospyros kaki</i>)	Gardenia (<i>Gardenia jasminoides</i>)
Malvaceae	Genipap tree (<i>Genipa americana</i>)
Cotton (<i>Gossypium</i>)	Mata De Mariposa (<i>Gonzalagunia hirsuta</i>)
Melastomataceae	<i>Ixora</i>
Canallito (<i>Conostegia xalapensis</i>)	Sapotaceae
<i>Miconia schlimii</i>	Star apple (<i>Chrysophyllum cainito</i>)
<i>Miconia trinervia</i>	Sapodilla (<i>Manilkara zapota</i>)
Myrtaceae	Abiu (<i>Pouteria caimito</i>)
<i>Melaleuca</i>	Zolive fruit plant (<i>Pouteria guianensis</i>)
Oleaceae	
Jasmine (<i>Jasminum</i>)	

**Confirmed host in Hawai'i

Plant Pest Control Branch (PPC): dab.ppc@hawaii.gov

Marques' soft scale (MSS)

Alecnochiton marquesi Hempel, 1921

IF YOU SUSPECT MSS:

If you suspect an infestation of MSS, please contact the Hawai'i Department of Agriculture and Biosecurity (dab.ppc@hawaii.gov).

Please note the following information:

Island:

City/District/Neighborhood:

Date:

Plant host scientific or common name:

If possible, GPS coordinates:

Level of infestation (e.g., low, high):

INFORMATION TO NOTE:

If possible, take several **clear** photos:

Suggested photos:

- 1. Host plant** – photo of the whole plant and also photos of the section(s) of the plant with scales
- Zoomed out and zoomed in photos of **group(s) of scales** from different angles
- 3. Close-up photos** from several angles of individual scales

Email photos to: dab.ppc@hawaii.gov

PHOTOS:

Dix-Luna, O. J., J. M. Montes-Rodríguez, A. J. Kulikowski, and T. Kondo.

Alecnochiton marquesi (Hemiptera: Coccoomorpha: Coccidae), a new record for Colombia and Costa Rica, and description of its first-instar nymph. *Zoology*, 40: 246-254.

REFERENCE:

ACKNOWLEDGEMENTS:

Special thanks to Takumasa Kondo and Ian C. Stocks.

MSS



Photo: Takumasa Kondo*

MSS

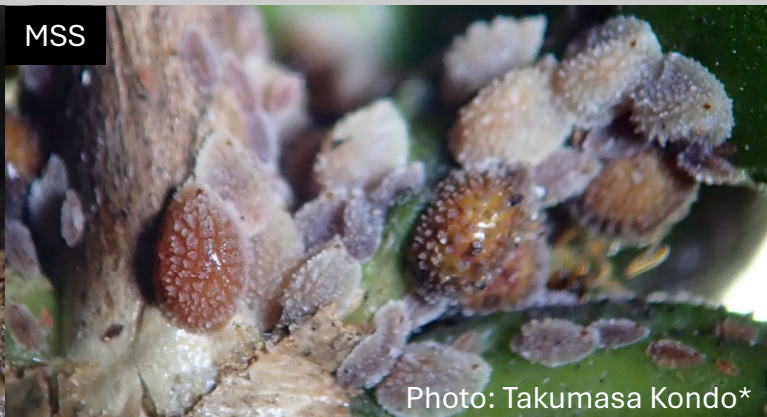


Photo: Takumasa Kondo*

*Takumasa Kondo (Corporación Colombiana de Investigación Agropecuaria-AGROSAVIA)

DAB is committed to maintaining an environment free from discrimination, retaliation, or harassment on the basis of race, color, sex, sexual orientation, religion, national origin, age, or disability with respect to any employment, program or activity. For more information, including language accessibility and filing a complaint, please visit DAB's website at <https://dab.hawaii.gov/>.

Plant Pest Control Branch (PPC): dab.ppc@hawaii.gov